



Experience the [R] EVOLUTION  
Enjoy your DNA..

**dna**

**125**

**180**

**GILERA**





A rider wearing a red and white racing suit and a white helmet is shown in motion on a red Honda DNA 180 scooter. The background is a blurred blue sky. The scooter's headlight is on, and the Honda logo is visible on the front fairing.

# dna 125 180

A [R]evolution on two wheels

The DNA redefines the genetic link between  
scooters and motorbikes.

The DNA is the merging of two genes: naked  
sports bike styling and the practicality of  
automatic gears and helmet storage.

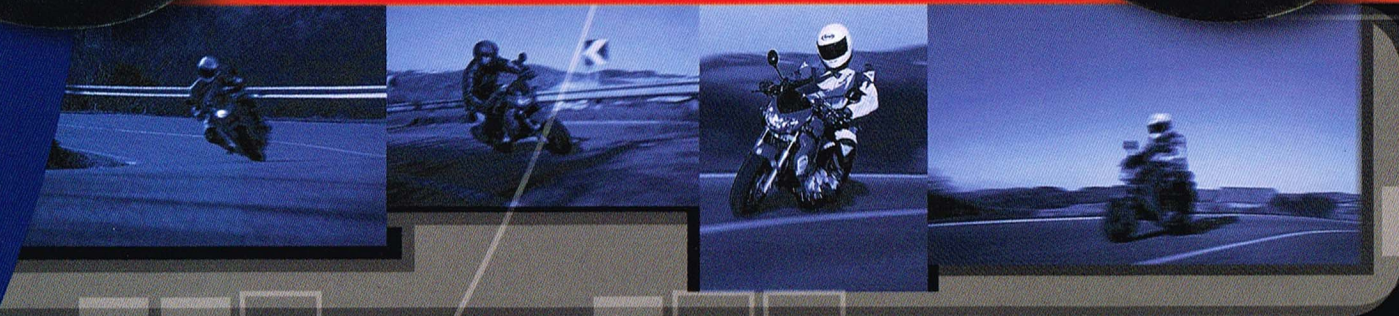
DNA



Discover your DNA.



heels.



Technology

4 stroke, 4 valve liquid cooled engine

Power

125cc - 15bhp

180cc - 19bhp

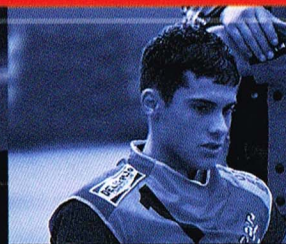


SILERA

dna

100% Scooter  
100% Motorbike  
200% Radical

180  
125



Front brake

Ø240mm disc, floating calliper with Ø25mm pistons

Rear brake

Ø240mm disc, calliper with Ø30mm opposed pistons



# edna





## technical specifications

## [R] EVOLUTION

## Helmet storage

Helmet locker  
disguised as the  
tank holds a full  
face helmet

## Dual suspension

For superior road  
holding and comfort

## Dashboard

Digital and  
analogue  
display

Engine:	180cc (125cc)
Bore:	single cylinder
Stroke:	69mm (57mm)
Capacity:	48.6mm
Cycle:	182cc (124cc)
Max Power:	4 stroke
Fuel:	19bhp@8750rpm (15bhp@9750rpm)
Type:	Unleaded
Ignition:	4 valve, single overhead camshaft
Starter:	CDI
Lubrication:	Electric
Cooling:	Wet sump, capacity 1 litre; chain-driven trochoidal pump; full flow oil filter
Clutch:	Liquid
Frame:	Automatic CUT (Continuously Variable Transmission)
Front suspension:	Twin Spar Frame in extruded steel
Rear suspension:	Hydraulic forks, Ø35mm
Front brake:	Two double active shock absorbers, spring pre-load adjustable to 4 positions
Rear brake:	Ø240mm disc, floating calliper with two Ø25mm pistons
Front tyre:	Ø240 disc, calliper with Ø30mm opposed pistons
Rear tyre:	120/70-14"
Length:	140/60-14"
Width:	1,920mm
Wheel base:	705mm
Fuel tank:	1,350mm
Running weight:	9 litres
	137kg



Dragon Red



Black (50cc only)

Lemon Yellow  
(50cc & 125cc only)Royal Blue  
(125cc & 180cc only)Matt Grey Nagual  
(180cc only)
[www.gilera.com](http://www.gilera.com)

For further information and price lists call our information line:  
**FREEPHONE 0800 20 30 10** quoting reference **MK2**,  
or visit our web site at [www.gilera.com](http://www.gilera.com)

Colours and specifications are correct at time of publishing (June 2001)  
but are subject to change at any time, without notice. Please check latest  
specifications and colour availability with your dealer before you order.



For details of  
your nearest  
dealer call FREE  
on 0800 20 30 10



12 months  
warranty with  
option to extend  
to 36 months



All-inclusive  
customer finance:  
contact your dealer  
for details



Contact your Gilera  
dealer or call  
0845 601 3095 for an  
insurance quote

